

How To Tear Down The Samsung Galaxy S6



Repair Tools BST-8921 (38 pcs/set)

SKU: ESTOL140506101137



- 01** Step 1: Take Out The SIM Card Tray.
- Power off the Samsung Galaxy S6.
 - Use an ejector pin or tweezers to take out



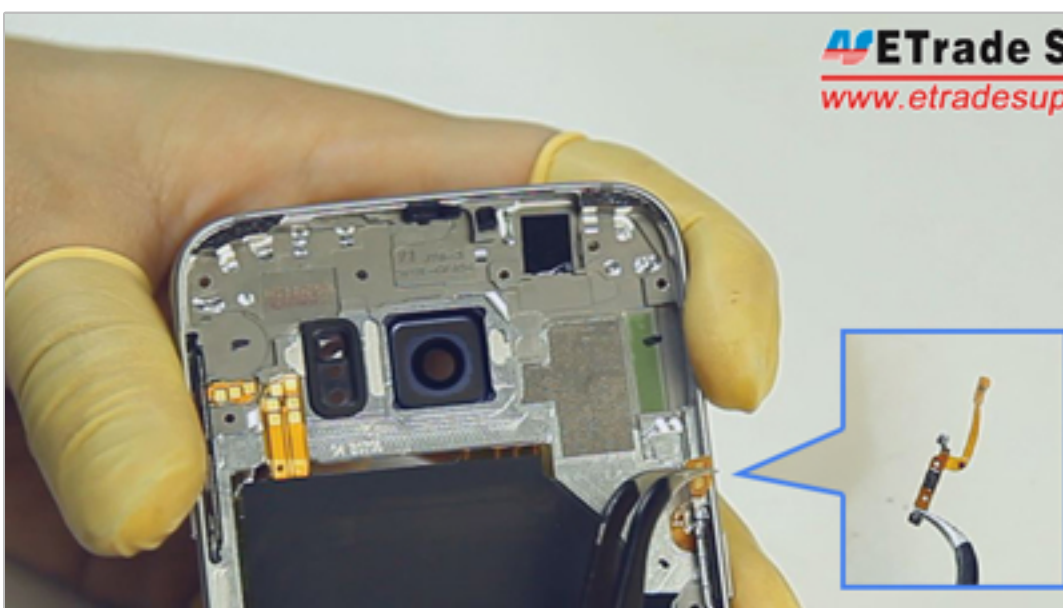
- 02** Step 2: Take Apart The Battery Door.
- Heat up the Samsung Galaxy S6's Battery Door.
 - Pull the battery cover up with a screen suction cup tool. Separate the battery door with a case opening tool.



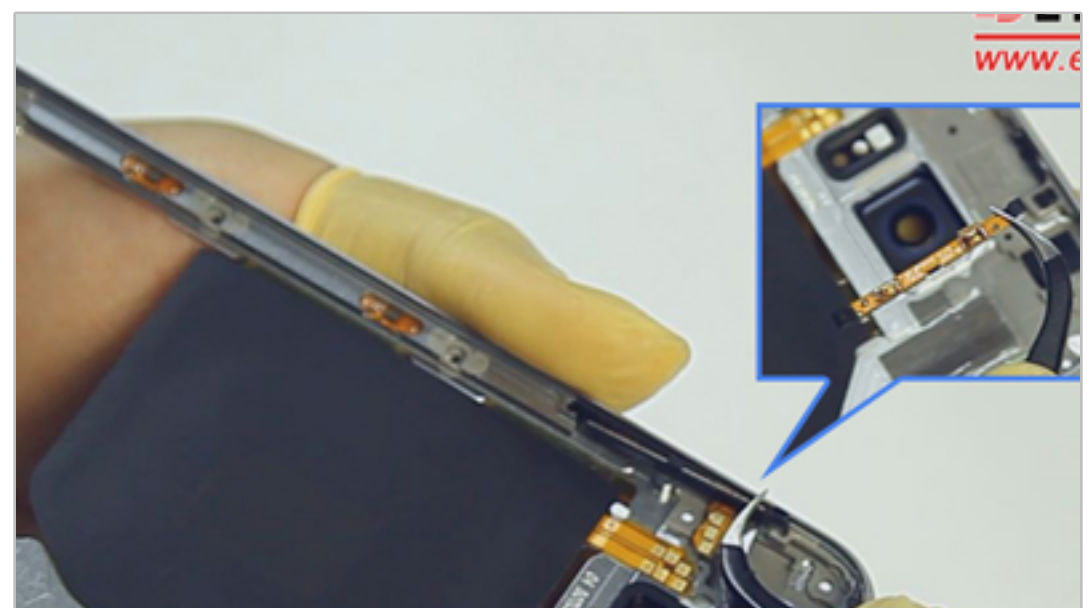
- 03** Step 3: Release The Rear Housing.
- Undo the 13 screws in the rear housing.
 - Heat up the LCD Assembly.



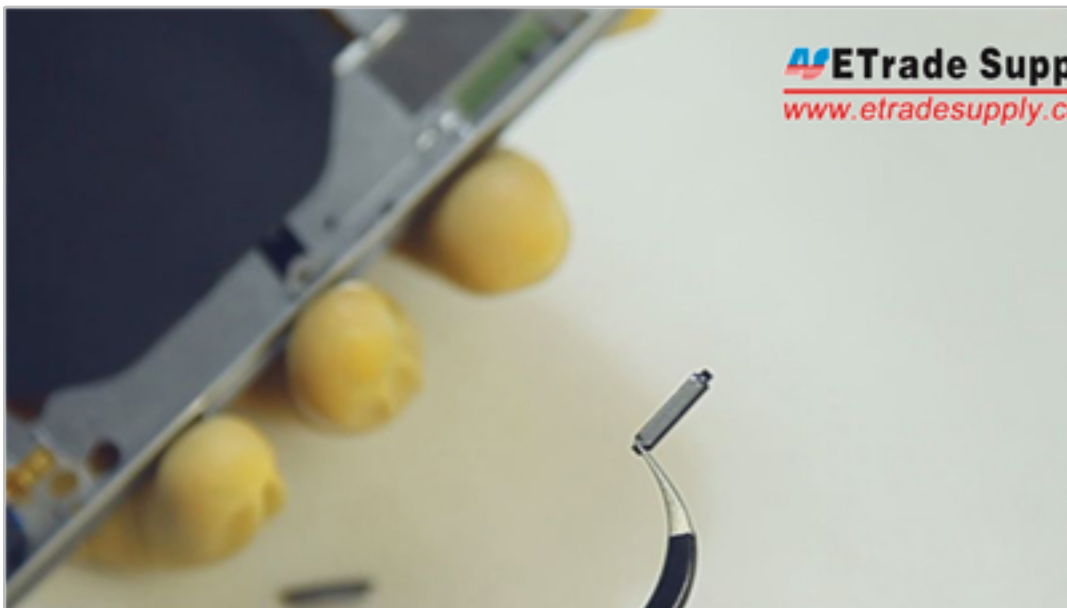
- 03-1** Separate the rear housing from the LCD Assembly with the help of a suction cup tool and case opening tool.



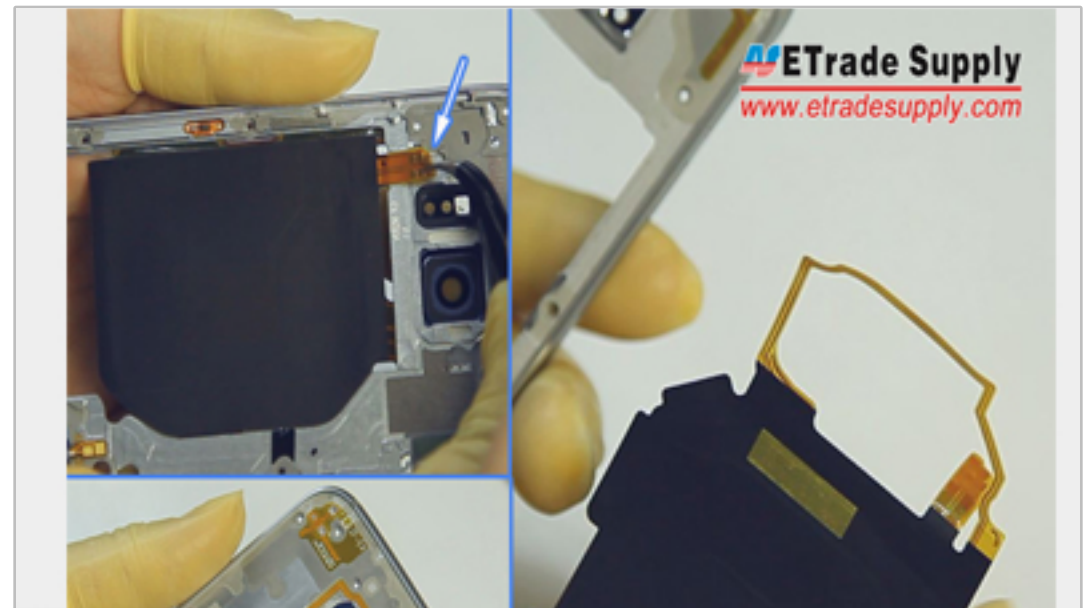
- 04** Step 4: Remove The Case Buttons.
- Remove the power button flex.



- 04-1** Remove the volume button flex.



04-2 • Remove the Case Buttons. (Notice: the Galaxy S6 power button and volume buttons are compatible with each other.)



05 Step 5: Release The Wireless Charging Chip
Pry up the wireless charging coil's flex ribbons on both sides of rear housing. (Notice: be careful not to damage the flex cable.)



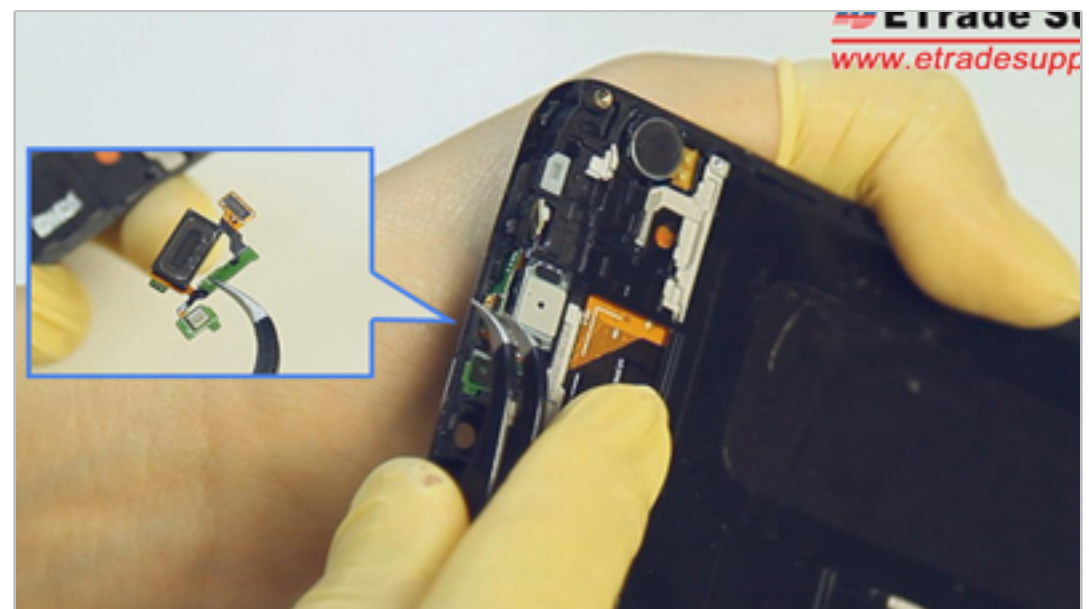
06 Step 6: Remove The Motherboard. • Pry up the LCD assembly connector, front facing camera connector, battery connector, ear speaker connector and home button flex ribbon



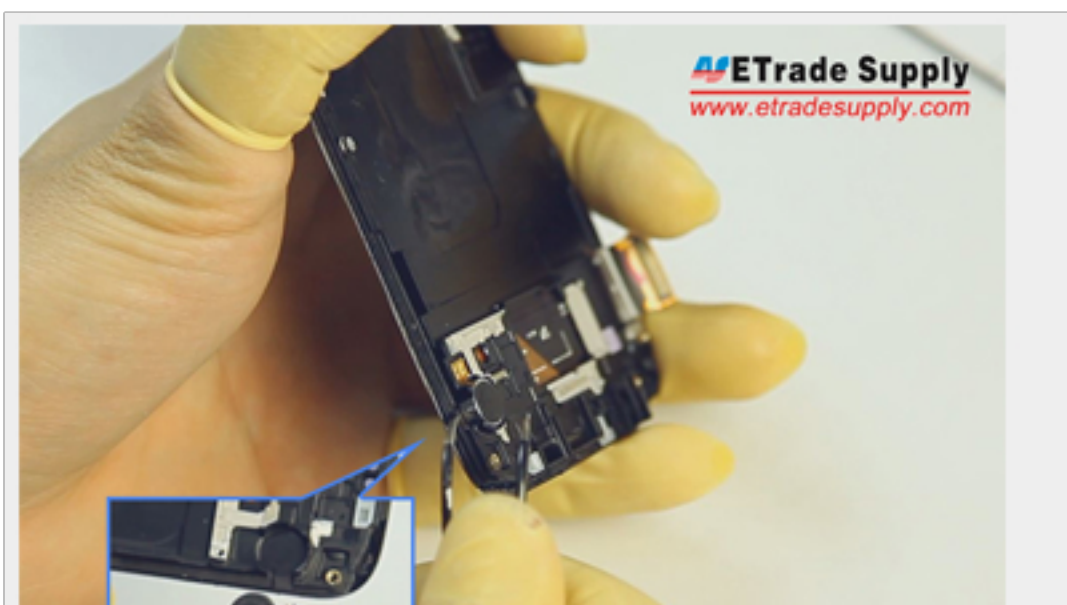
07 Step 7: Remove The Battery.
• Gently pry up the battery with a spudger tool.



08 Step 8: Remove Small Components.
• Remove the front facing camera.



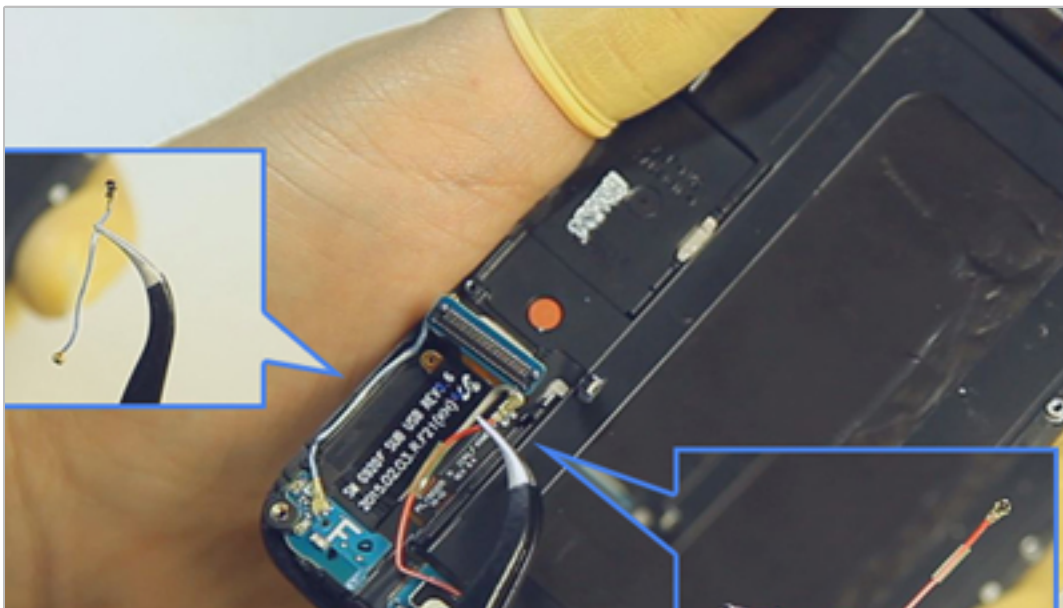
08-1 Remove the ear speaker. (Notice: be careful not to break the flex ribbon.)



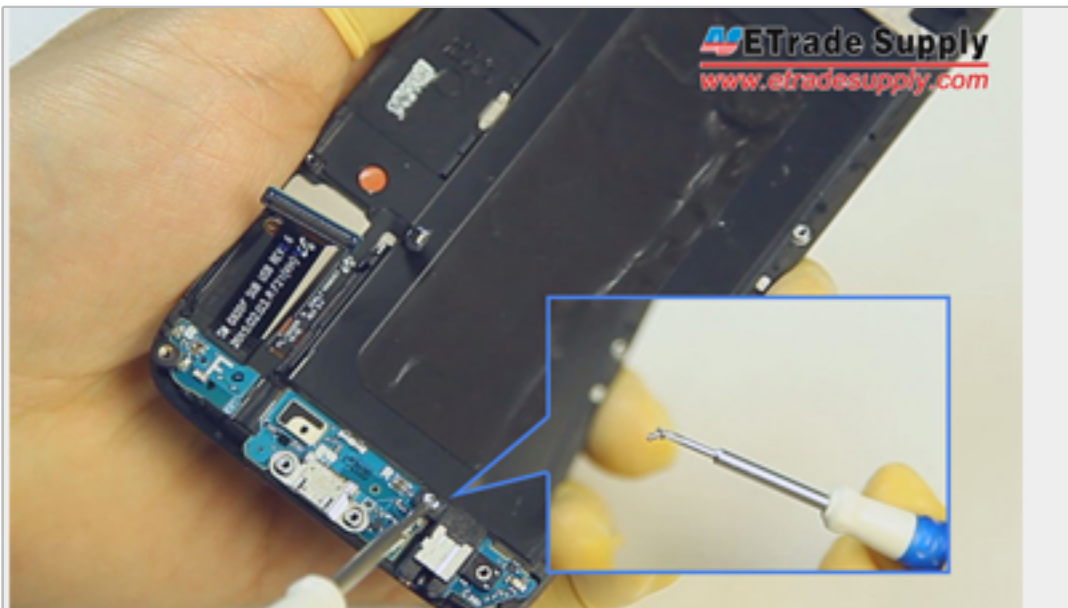
08-2 Remove the vibrating motor.



08-3 Remove the rear facing camera.



09 Step 9: Release The Charging Port Assembly.
• Remove the Bluetooth and Wi-Fi cables.



09-1 • Undo the earphone jack screw. (Notice: the screw is different than the rear housing)



09-2 • Heat up the LCD Assembly to release the front housing.
• Pry up the navigation light stickers.



10 Step 10: Release The Home Button With Flex.
• Pry up the connector on the back side of home button.



10-1 The Samsung Galaxy S6 disassembly is now complete.