

## How to Tear Down Samsung Galaxy S6 Edge In 5 Steps



Curved Hook Tweezers (Model: ESD-15) ,Black SKU: ESTOL10031513-23



**01** Heat up S6 Edge's back cover. (Notice: the adhesive on the battery door is extremely strong.no longer than 1 min.)



**1.1** Insert poker cards into the edge to remove the adhesive and widen the



**02** Remove the rear housing.  
2.1 Take the SIM card tray out.



**2.1** Undo the 13 screws in the rear housing.



**2.2** Separate the rear housing from LCD Assembly with the help of a suction cup tool and a case opening tool.



**2.3** Remove the 3 case button flex ribbon cables. (Notice: case buttons are all interchangeable.)





**2.4** Remove the 3 case button flex ribbon cables.



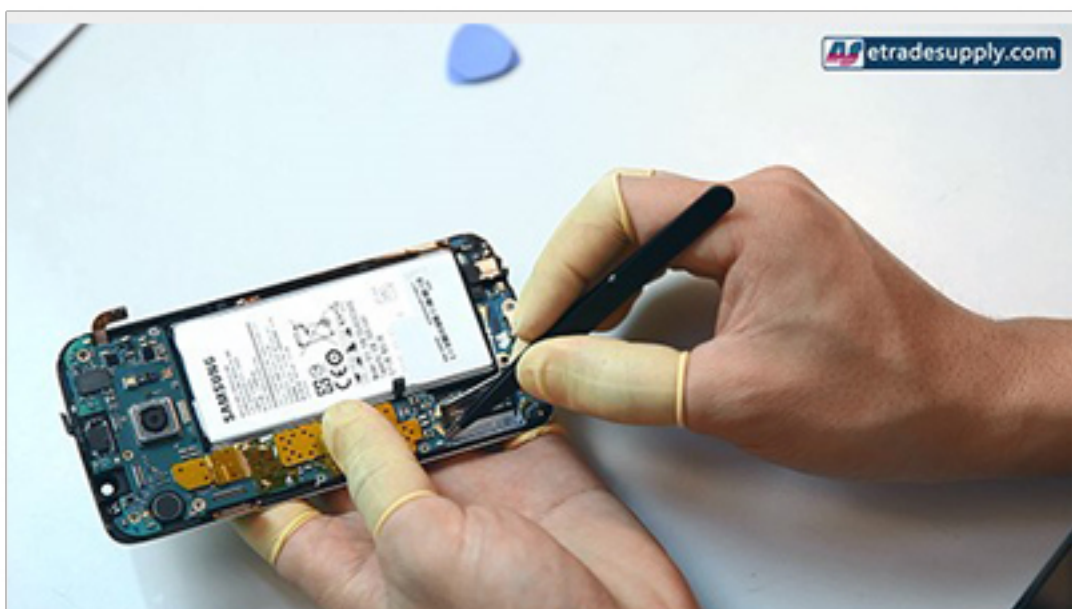
**2.5** Remove the 3 case button flex ribbon cables.



**2.6** Peel off the wireless charging coil. (Notice: the wireless charging coil is not compatible with S6.)



**3** Remove the motherboard. Remove the front facing camera.



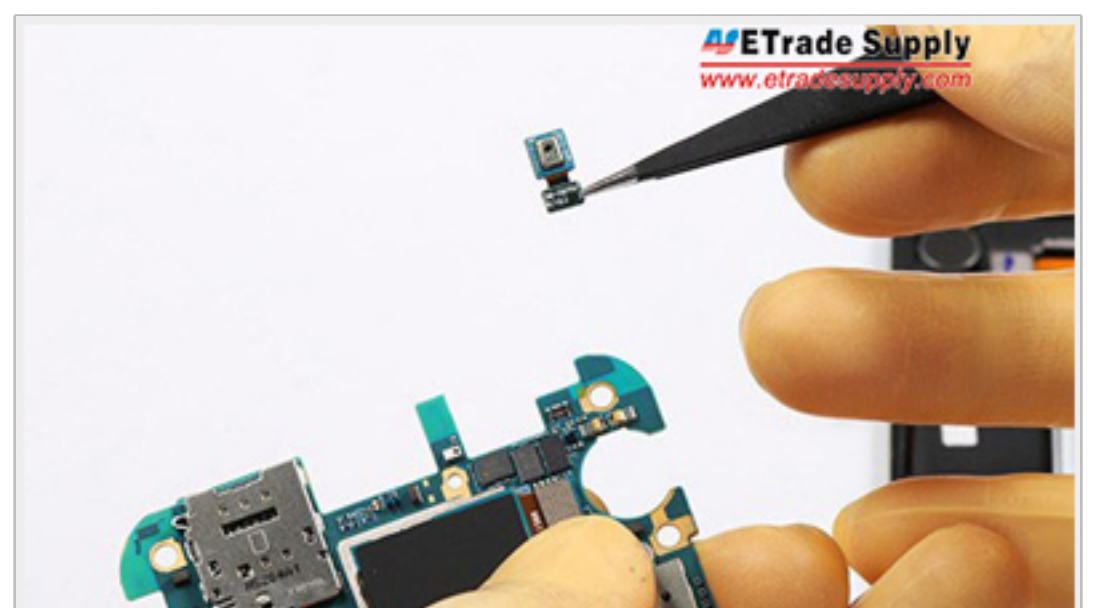
**3.1** Pry up the 2 antennas from the main board.



**3.2** This OEM Apple iPhone 5 Waterproof Protective Case which works with all iPhone 5 models



**3.3** Remove the ear speaker assembly.



**3.4** Remove the mic from the top of the logic board.





**3.5** Remove the rear facing camera.



**4** Remove the charging port assembly. Undo the 2 screws near the earphone jack by the charging port.



**5.1** Remove the battery.  
5.1 Gently pry up the battery with a spudger tool.



**5-2** 5.2 Notice: We recommend using a plastic spudger to prevent damage to the device.