

## How To Disassemble/Tear Down Motorola Nexus 6



360/PH00x50 Screwdriver

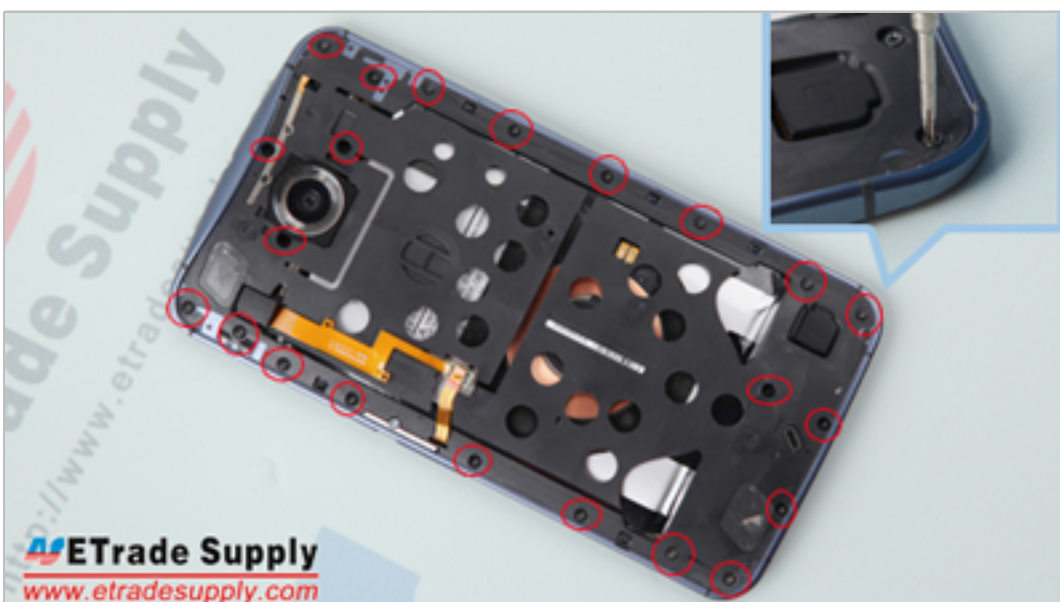
SKU: ESTOL10031080



**01** Power off the device and use an eject pin or tweezers to release the SIM card tray.



**02** Heat up the battery door for 2 minutes to soften the adhesive and insert the case opening tool to pry up the battery door.



**03** Undo the 22 screws in the rear housing.



**04** Gently remove the rear housing assembly from the screen assembly.



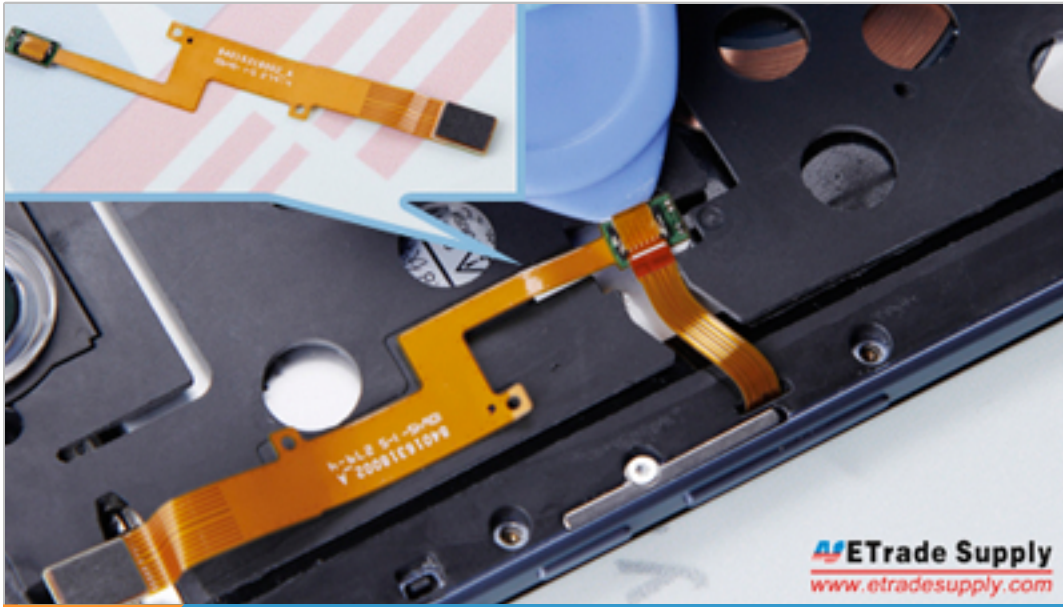
**05** Remove the gasket on the rear housing near the bottom of the phone then carefully pry up the flex ribbon connector underneath.



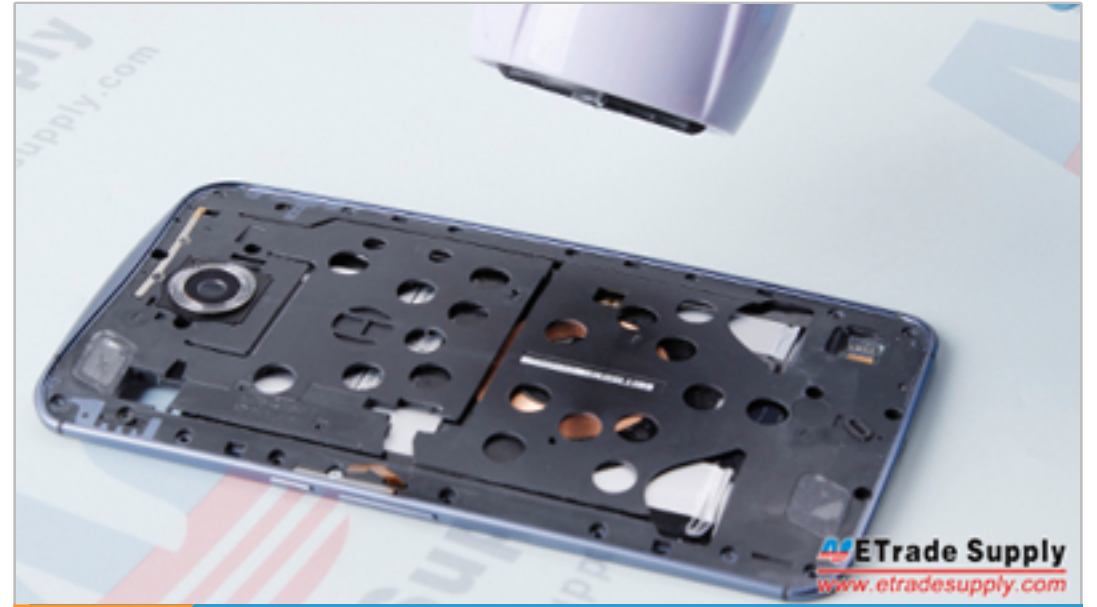
**06** Remove the gasket on the rear housing near the top of the phone then carefully pry up the flex ribbon connector underneath.



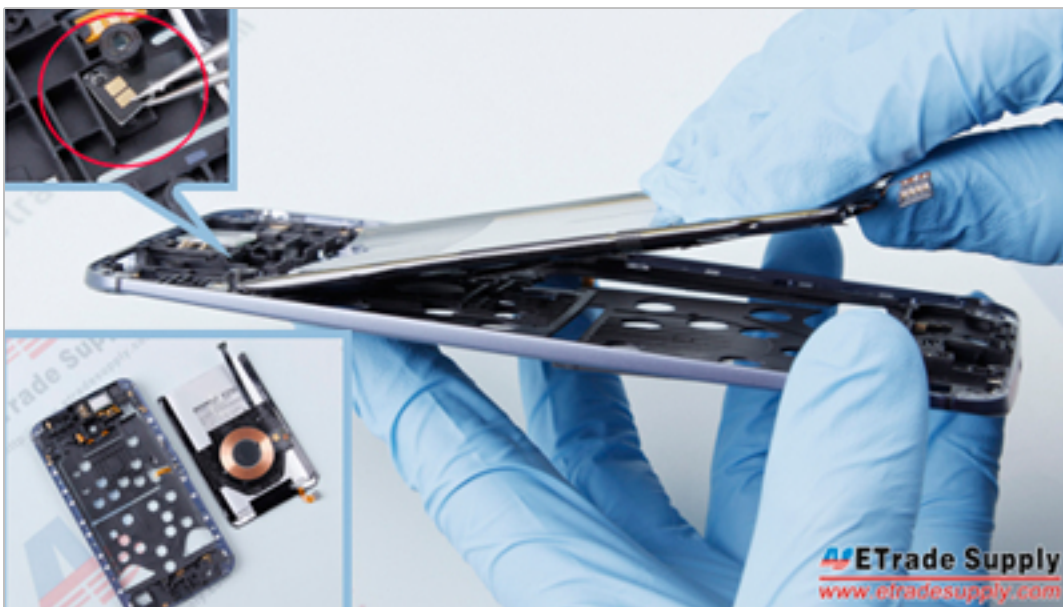
# How To Disassemble/Tear Down Motorola Nexus 6



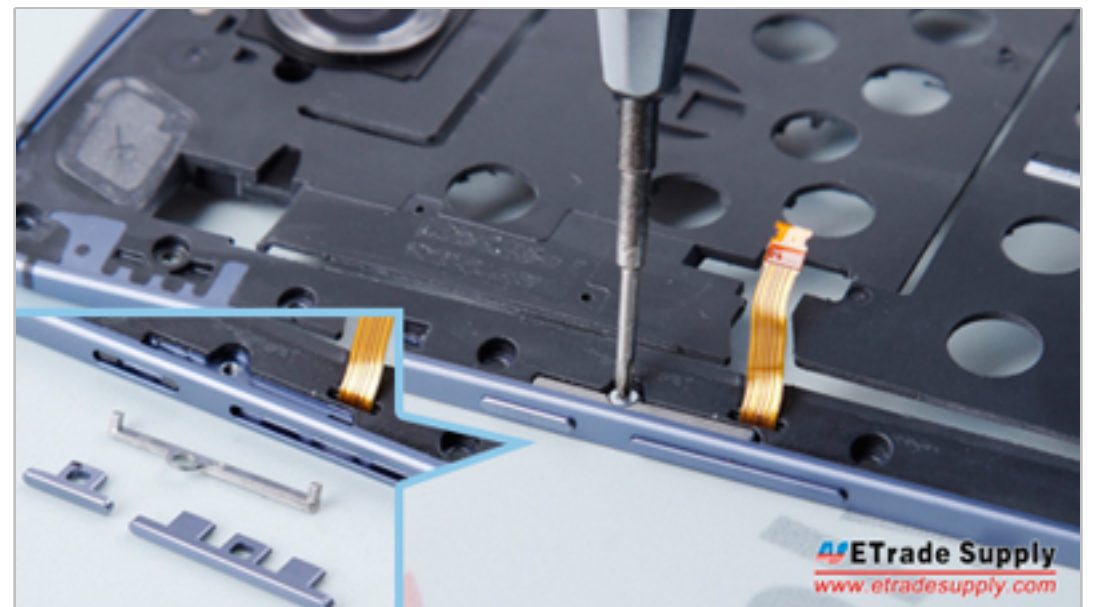
**07** Carefully pry up the latch on the flex connector to separate it from the flex ribbon extender.



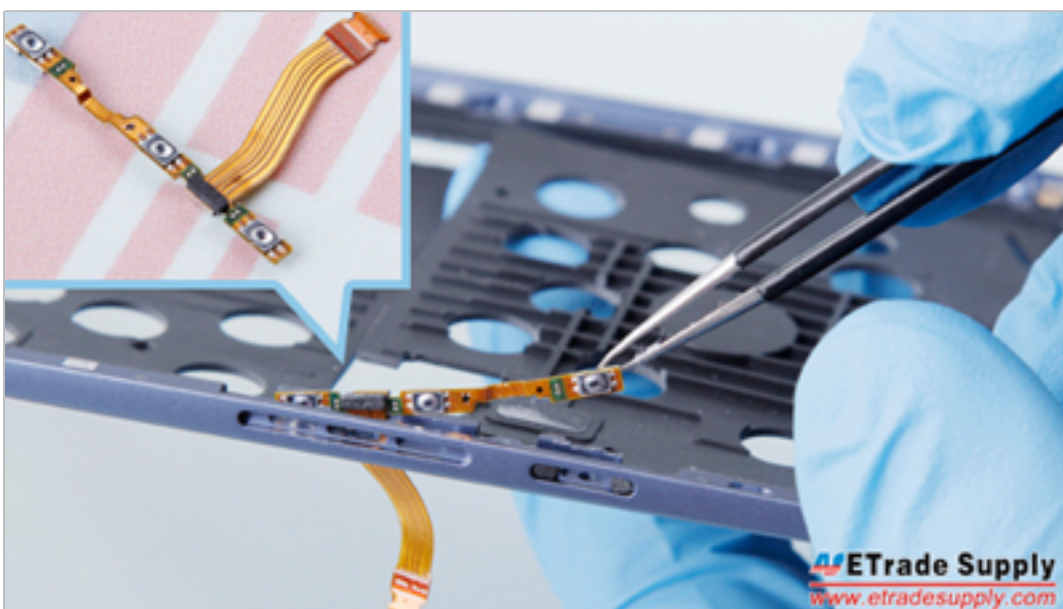
**08** Heat up the rear housing for 10 seconds to soften the battery adhesive.



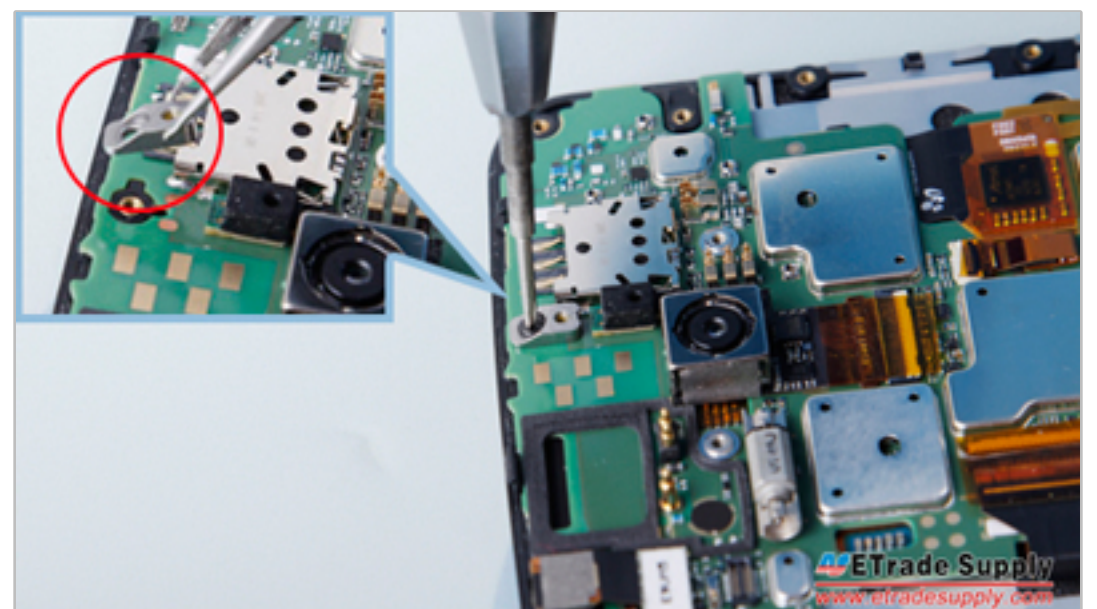
**09** Pry up the battery flex connector that adhered to the rear housing.



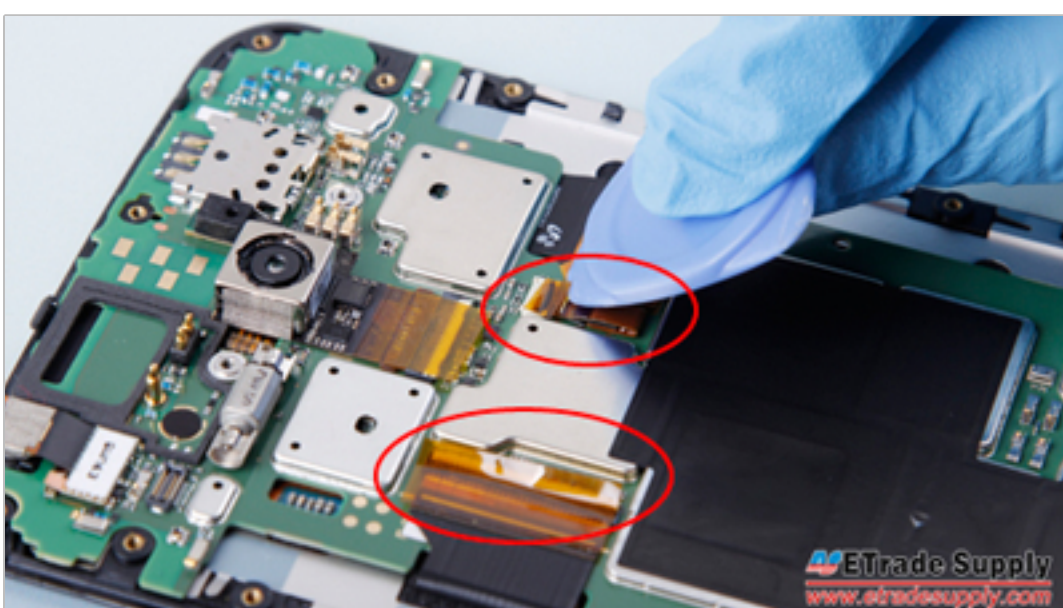
**10** Undo the screw that locks the side key metal bracket then remove the side keys.



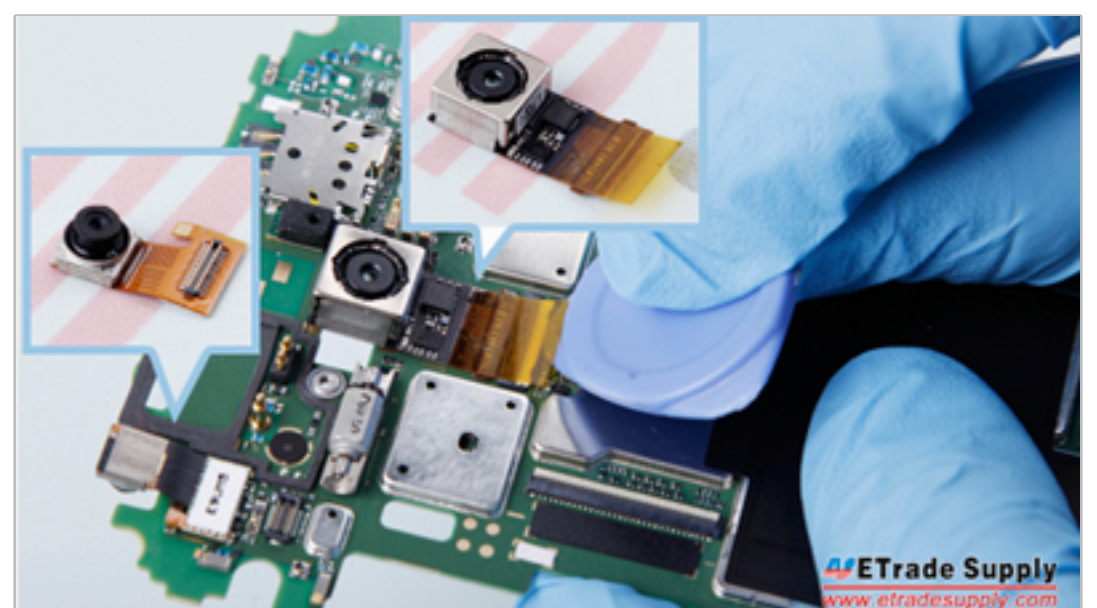
**11** Remove the side key flex cable ribbon.



**12** Undo the screw and metal bracket that locks the front housing and main board.



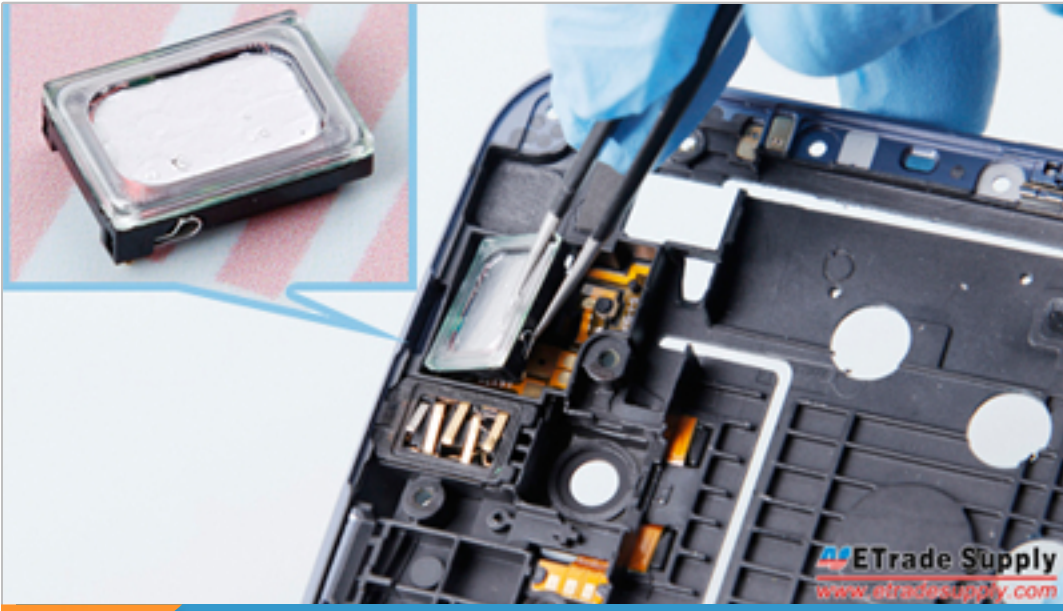
**13** Pry up the LCD flex connector and digitizer connector and remove the motherboard.



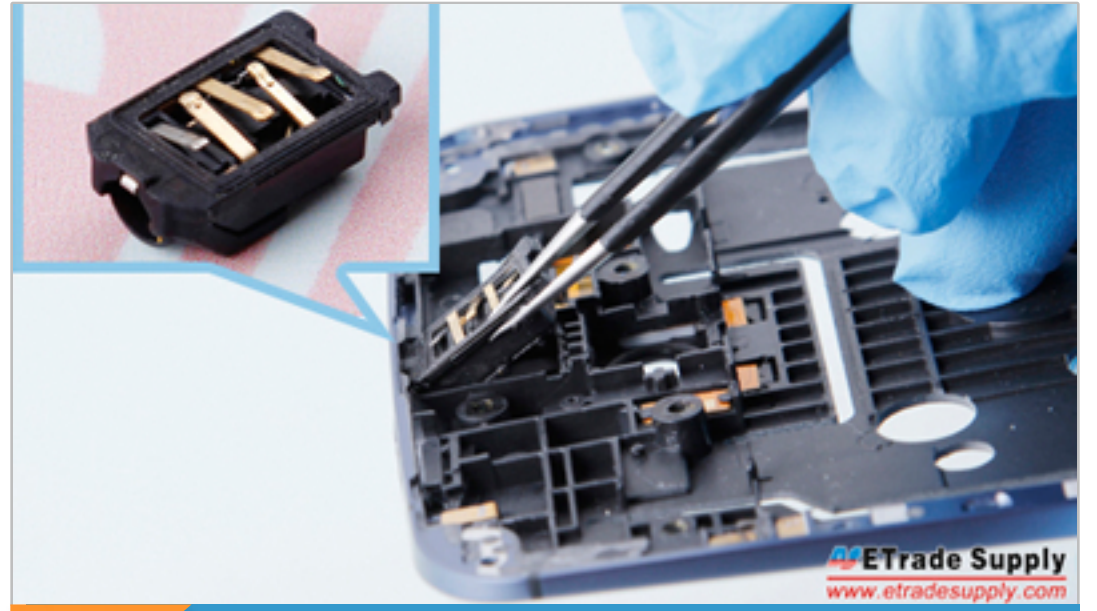
**14** Pry up the front and rear facing camera flex connectors then remove the cameras.



# How To Disassemble/Tear Down Motorola Nexus 6



**15** Remove the front speaker.



**16** Remove the headphone jack.



**17** The Nexus 6 disassembly is now completed.