

How to Disassemble/Tear Down Motorola Moto G



T4 Torx Screwdriver

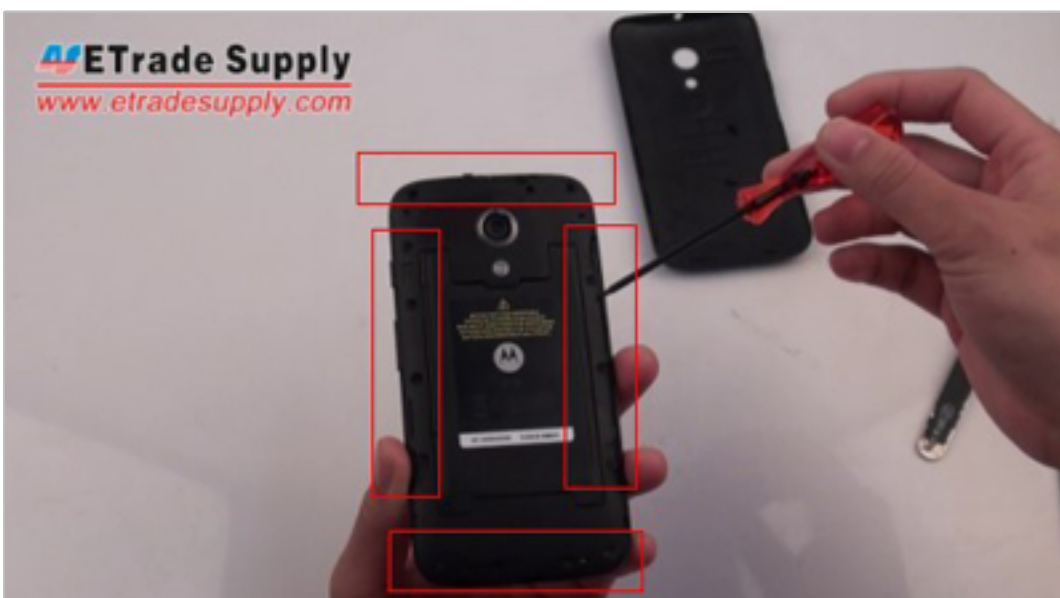
SKU: ESTOL10031110



01 Power the Motorola Moto G off.



02 Peel off the Moto G battery door.



03 Undo 14 screws fastening the Moto G rear housing.



04 Remove the Moto G rear housing with the plastic pry tool.



05 Remove the Moto G battery after disconnecting the battery connector.



06 Use the plastic pry tool to remove the Motorola Moto G battery.

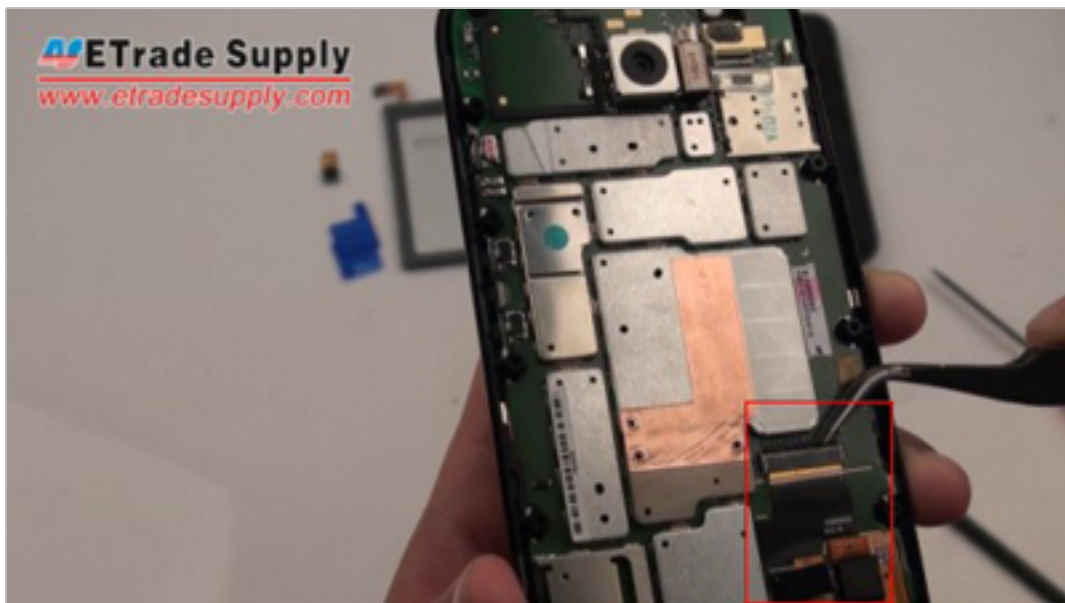
How To Disassemble/Tear Down Motorola Moto G



07 Disconnect the camera connector to remove Moto G front facing camera.



08 Remove the blue plastic cover protecting the connectors.



09 Peel off the Moto G screen after disconnecting the Moto G screen connector.



10 Remove the Moto G motherboard with the plastic pry tool.



11 The Motorola Moto G LCD screen and digitizer assembly with front housing is removed.



12 The Moto G disassembly is completed.